



NEC HWY Y & 58 HWY ● BELTON, MO

CROSSROADS AT BELTON

- Anchored by a 68,000 SF Cosentino's Price Chopper
- Join Arvest Bank, Great Clips, Pride Cleaners, Pizza Hut and more
- 25,000 SF junior anchor opportunity
- Small shops available: 1,400 SF and up
- Pad sites available: 0.81 AC & 0.85 AC
- Route Y improved to a 4-lane highway
- Near Academy Sports, Hobby Lobby and Menards

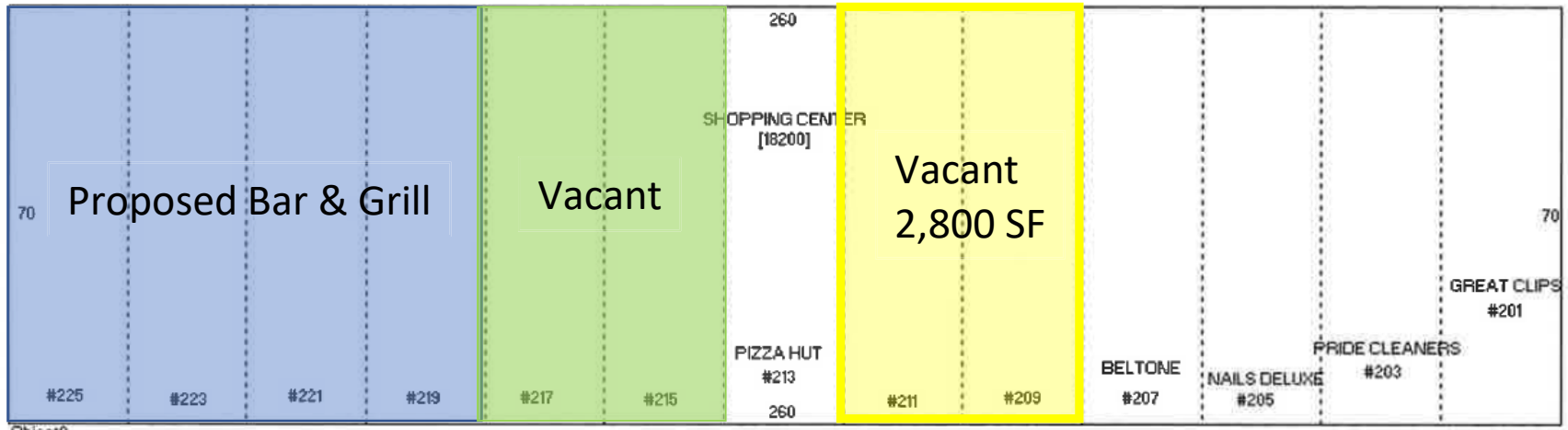
FOR MORE INFORMATION:

DAVID CHRISTIE

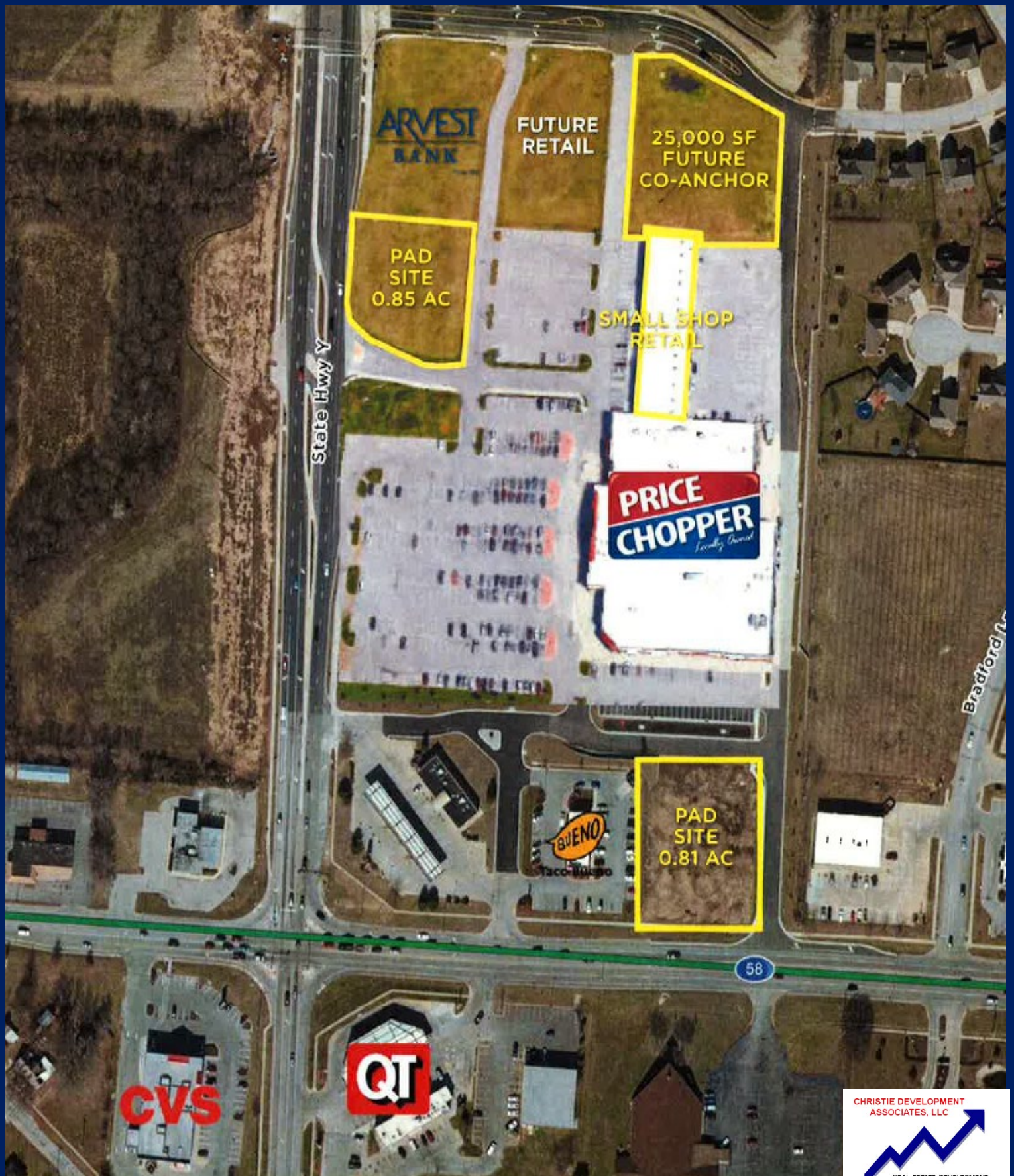
P: 913.649.4500

E: djc@christiedev.com





Object0



ARVEST
BANK

FUTURE
RETAIL

25,000 SF
FUTURE
CO-ANCHOR

PAD
SITE
0.85 AC

SMALL SHOP
RETAIL

PRICE
CHOPPER
Locally Owned

State Hwy Y

Bradford

PAD
SITE
0.81 AC

BUENA
Taco-Buena

58

CVS

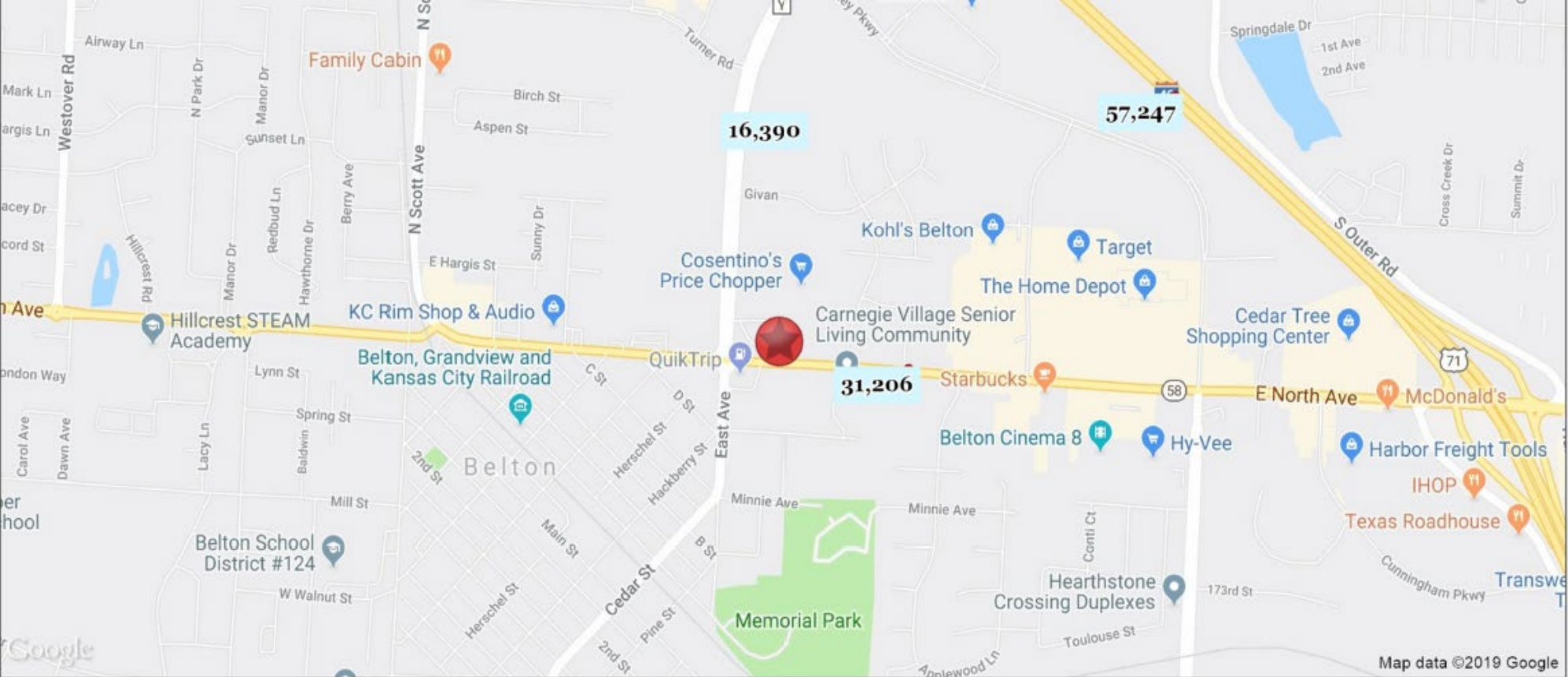
QT

CHRISTIE DEVELOPMENT
ASSOCIATES, LLC

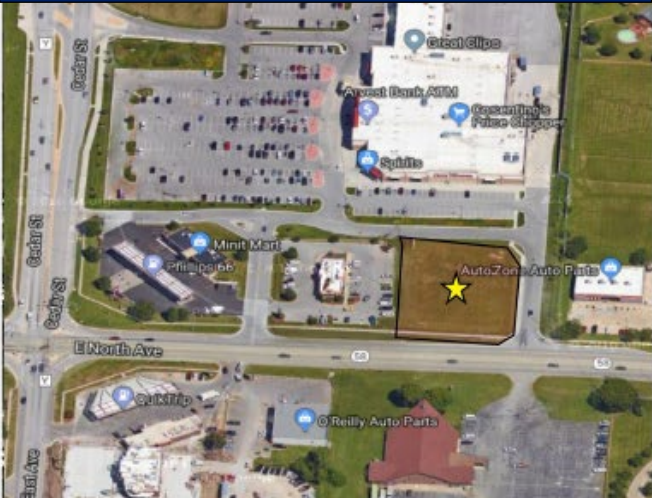


REAL ESTATE DEVELOPMENT
INVESTMENTS / BROKERAGE

Cosentino's Corner Pad Site



Aerial View



Demographics

	1 mi radius	5 mi radius	5 min drivetime
Population	7,387	63,463	18,662
Population Median Age	34.6	37.0	36.1
5 Yr Pop Growth (Total%)	9.4%	4.8%	5.5%

5 Mile Information



Details

Build-to-suit available

Anchored by major, quality grocer

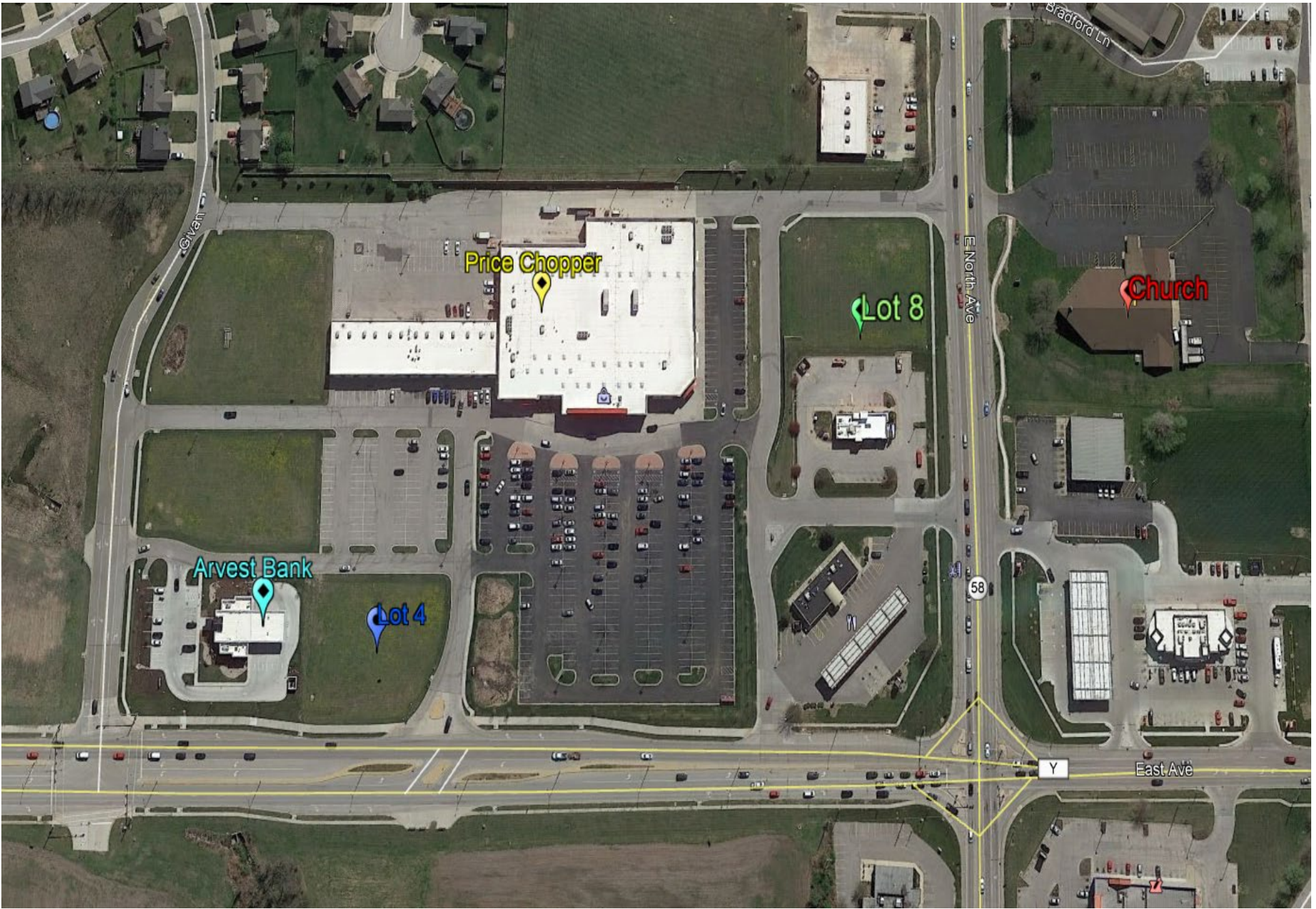
**New, quality tenants moving in
development continue to drive traffic**

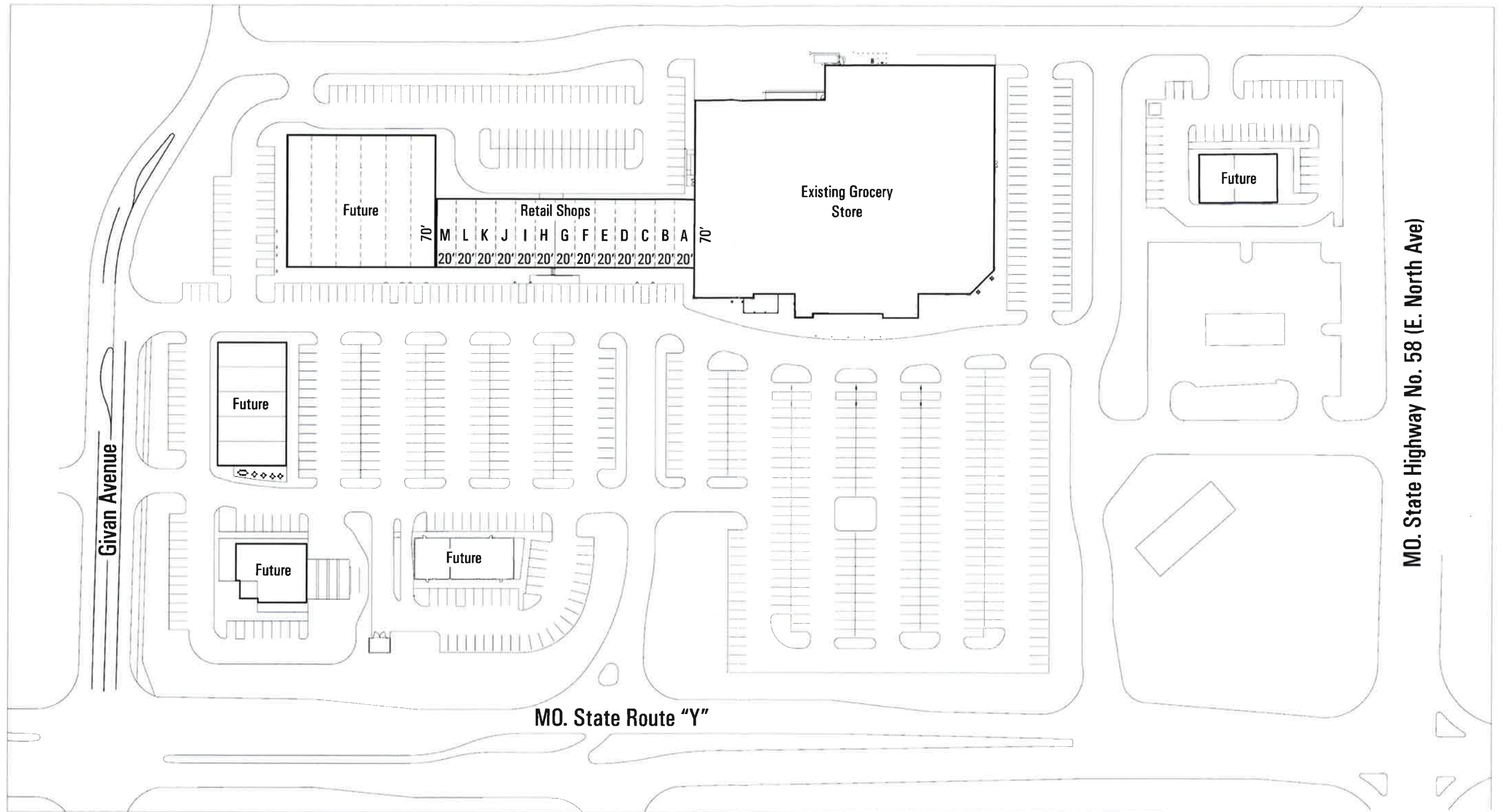
Contact Information

CHRISTIE DEVELOPMENT ASSOCIATES, LLC

David Christie
O: 913.649.4500
djc@christiedev.com

REAL ESTATE DEVELOPMENT INVESTMENTS / BROKERAGE





Note: Refer to civil engineering site plan for final parking and drive layouts.

