

**CHRISTIE DEVELOPMENT
ASSOCIATES, LLC**



**REAL ESTATE DEVELOPMENT
INVESTMENTS / BROKERAGE**

Cornerstone Commons

5922 Barkely Street, Mission, KS

For Information:

David Christie

913.522.6333

djc@christiedev.com

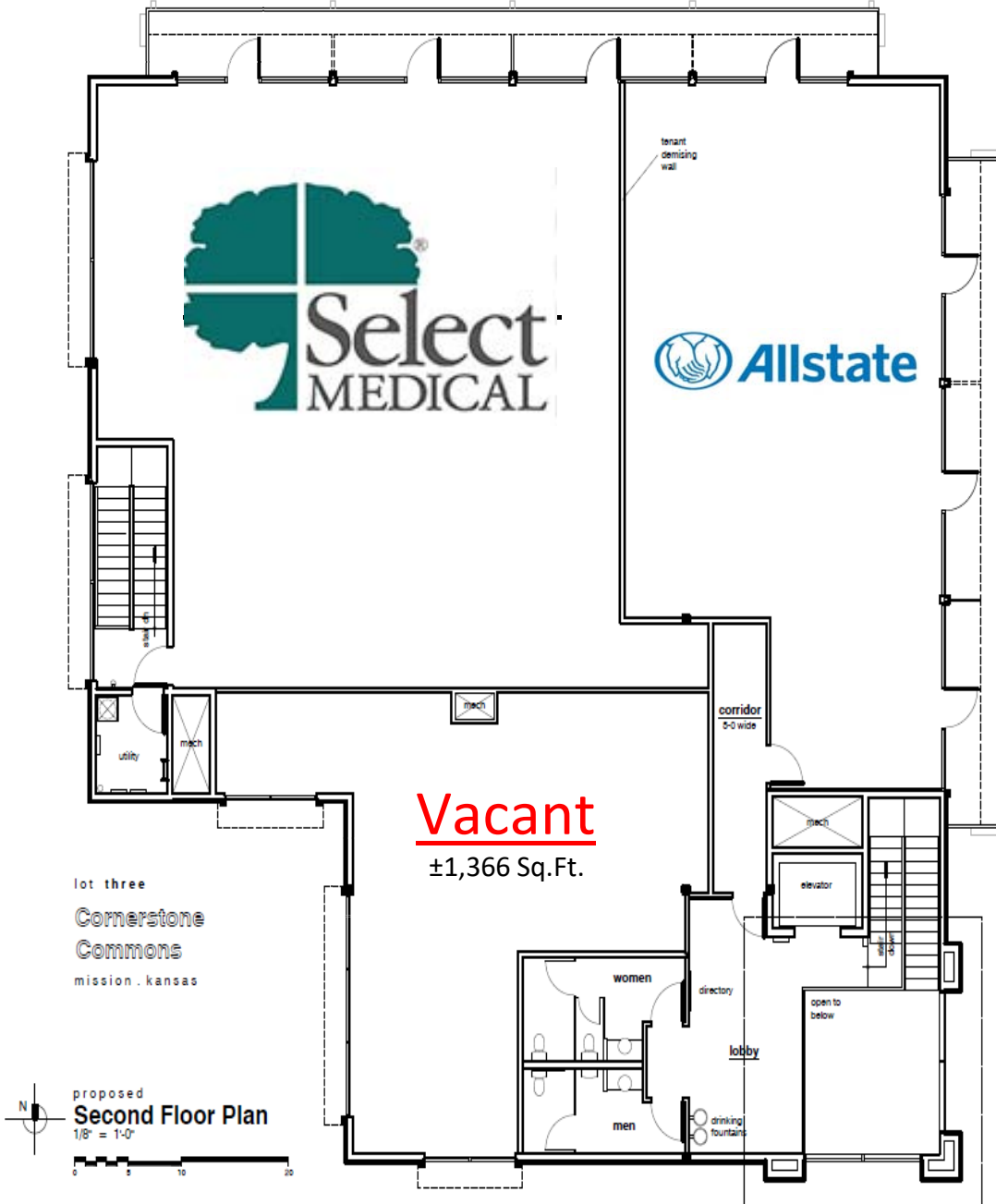
**Christie Development
Associates, LLC**

Real Estate Development
Investments/Brokerage
7217 W. 110th Street
Overland Park, KS 66210
O: 913.649.4500
F: 913.649-4566



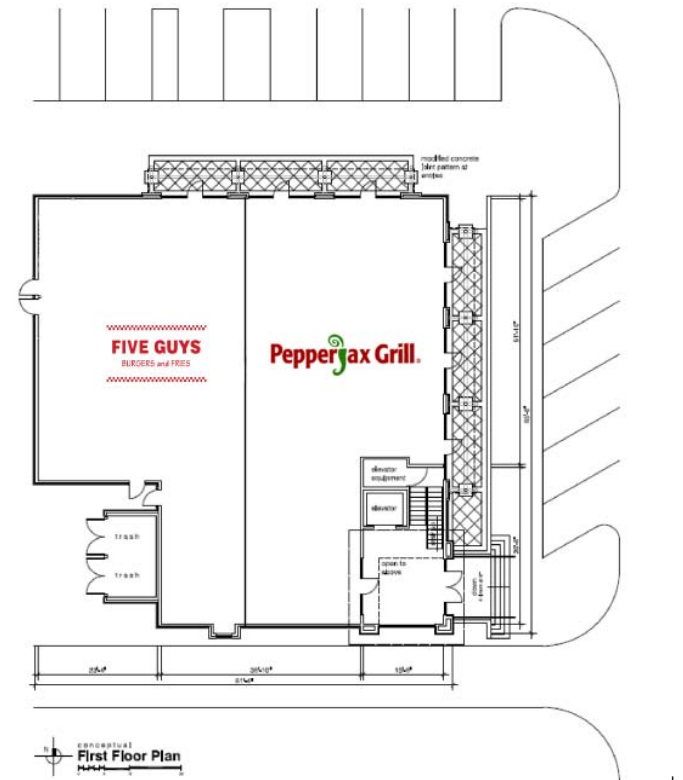
This information has been occurred from sources we believe to be reliable, but we make no representations or warranties, expressed or implied, as to the accuracy of the information. References to square footage or age are approximate. Buyer must verify the information and bears all risk for any inaccuracies.

Site Plan

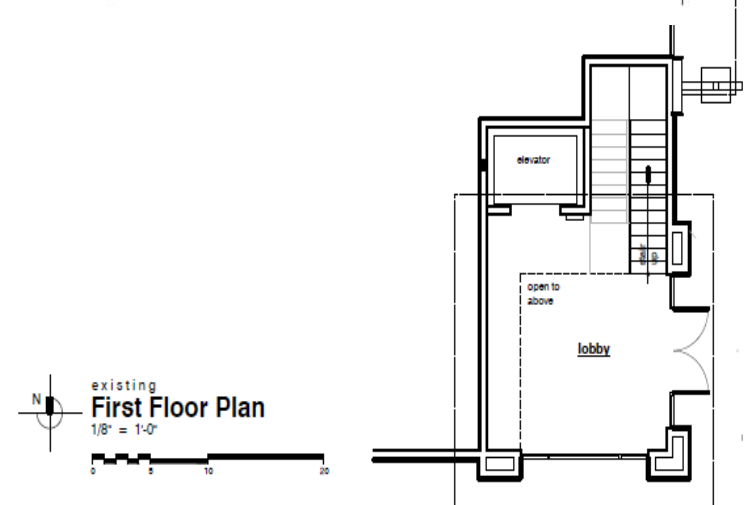


lease plan

18 November 2019



existing
First Floor Plan
1/8" = 1'-0"



lease plan

18 November 2019

Property Photos



Property Photos



Private Employee Entrance



Aerial

