

**CHRISTIE DEVELOPMENT  
ASSOCIATES, LLC**



REAL ESTATE DEVELOPMENT  
INVESTMENTS / BROKERAGE

# Sherwood Crossings

**2727 SW Wanamaker Rd, Topeka, KS 66614**

**12.7 Acres ~ 73,048 sq. ft. leasable ~ 445 parking spaces**

*For Information:*

**Garrett Fugate**

913-649-4500

garrett@christiedev.com

**Christie Development  
Associates, LLC**

Real Estate Development  
Investments/Brokerage

7217 W 110<sup>th</sup> Street

Overland Park, KS 66210

O: 913-649-4500

F: 913-6459-4566



"This information has been secured from sources we believe to be reliable, but we make no representation or warranties, expressed or implied, as to the accuracy of the information. References to square footage or age are approximate. Buyer/Tenant must verify the information and bears all risk for any inaccuracies."



Sherwood Crossings  
2727 SW Wanamaker Rd, Topeka, KS 66614

VACANT  
1,620 SQ FT



Cosmo Prof

Dirty Dough

GLORY DAYS  
PIZZA



VACANT  
2,145 SQ FT

KANSASLAND  
TIRE AND SERVICE

Wanamaker Rd



VACANT  
8,182 SQ FT

TT ASIAN GROCERY

CVS/pharmacy



PAMPERED PETS

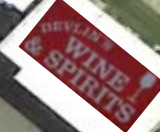


THE HAIR MILL

CBD  
American Shaman

FARM BUREAU  
FINANCIAL SERVICES

SUBWAY



29th St

CHRISTIE DEVELOPMENT  
ASSOCIATES, LLC



REAL ESTATE DEVELOPMENT  
INVESTMENTS / BROKERAGE

Batteries + Bulbs

Jimmy Craig



HyVee  
GAS





# Sherwood Crossings

2727 SW Wanamaker Rd, Topeka, KS 66614

12.7 acres  
73,048 sf leasable  
445 parking spaces

VILLA WEST  
TOPEKA, KS





# Sherwood Crossing

29<sup>th</sup> Street and Wanamaker Road  
Topeka, KS



	Population	Total Households	Average Household Income
1 Mile	13,567	6,245	\$78,392
3 Miles	59,789	26,924	\$84,654
5 Miles	99,287	45,925	\$75,645
5 Min. Drive Time	23,487	11,942	\$84,145
10 Min. Drive Time	76,892	34,294	\$83.245

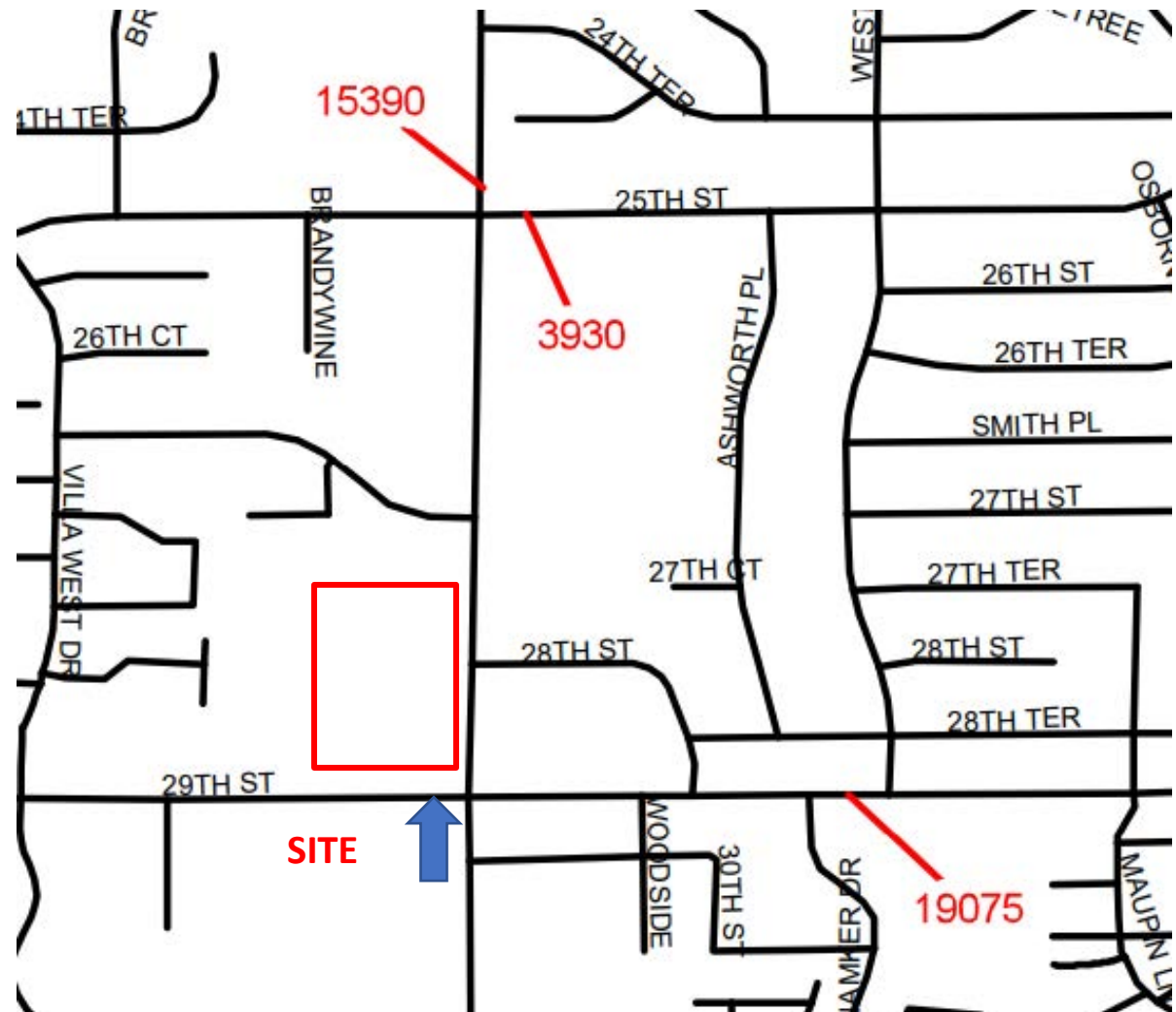
**CHRISTIE DEVELOPMENT  
ASSOCIATES, LLC**



REAL ESTATE DEVELOPMENT  
INVESTMENTS / BROKERAGE

# Sherwood Crossings

**2727 SW Wanamaker Rd, Topeka, KS 66614**



"This information has been secured from sources we believe to be reliable, but we make no representation or warranties, expressed or implied, as to the accuracy of the information. References to square footage or age are approximate. Buyer/Tenant must verify the information and bears all risk for any inaccuracies."

*For Information:*

**Garrett Fugate**

913-649-4500

garrett@christiedev.com

**Christie Development  
Associates, LLC**

Real Estate Development  
Investments/Brokerage

7217 W 110<sup>th</sup> Street

Overland Park, KS 66210

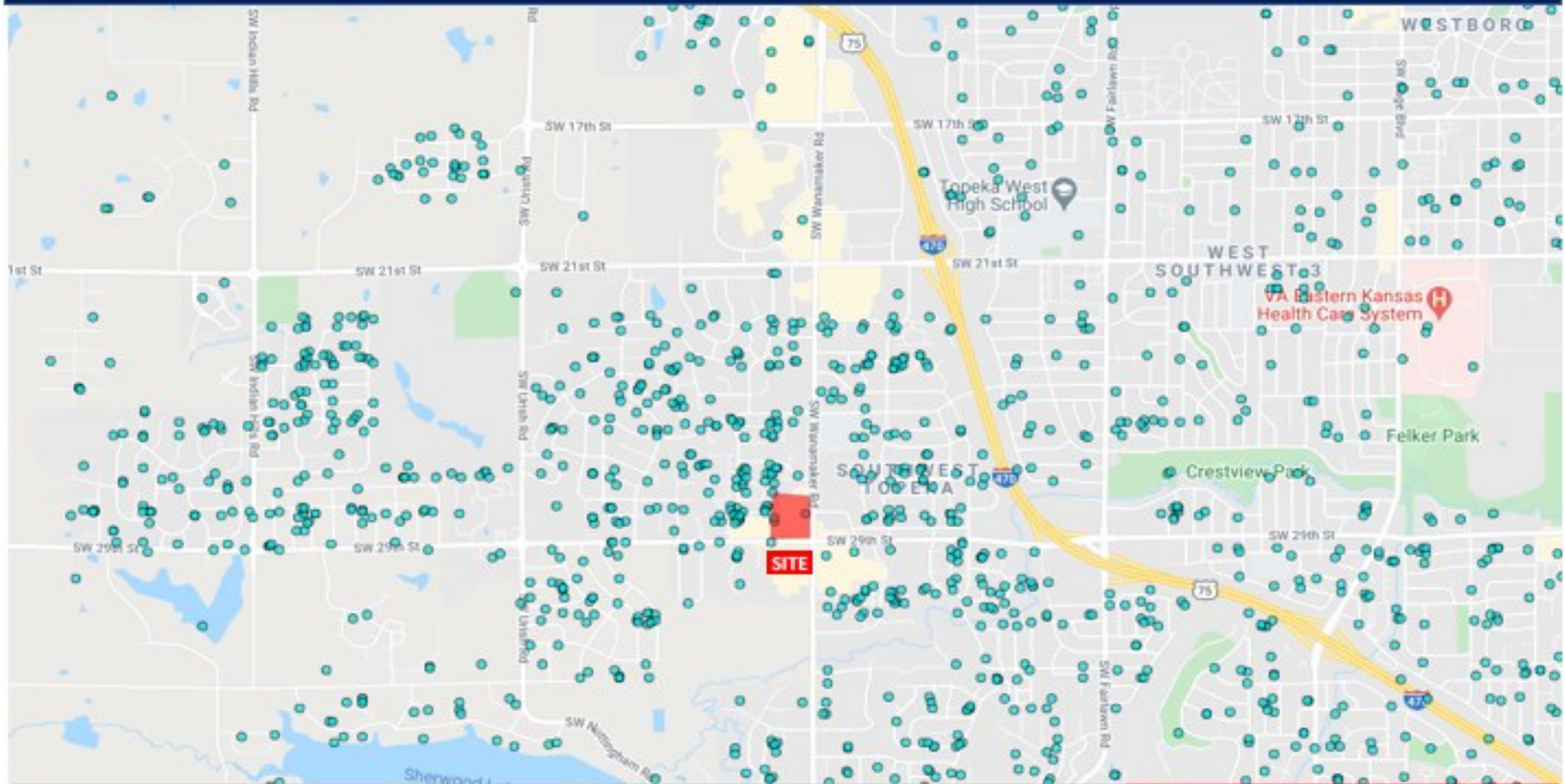
O: 913-649-4500

F: 913-6459-4566



# Residential Density Map

## Sherwood Crossing Shopping Center



**FOR MORE  
INFORMATION  
PLEASE CONTACT**

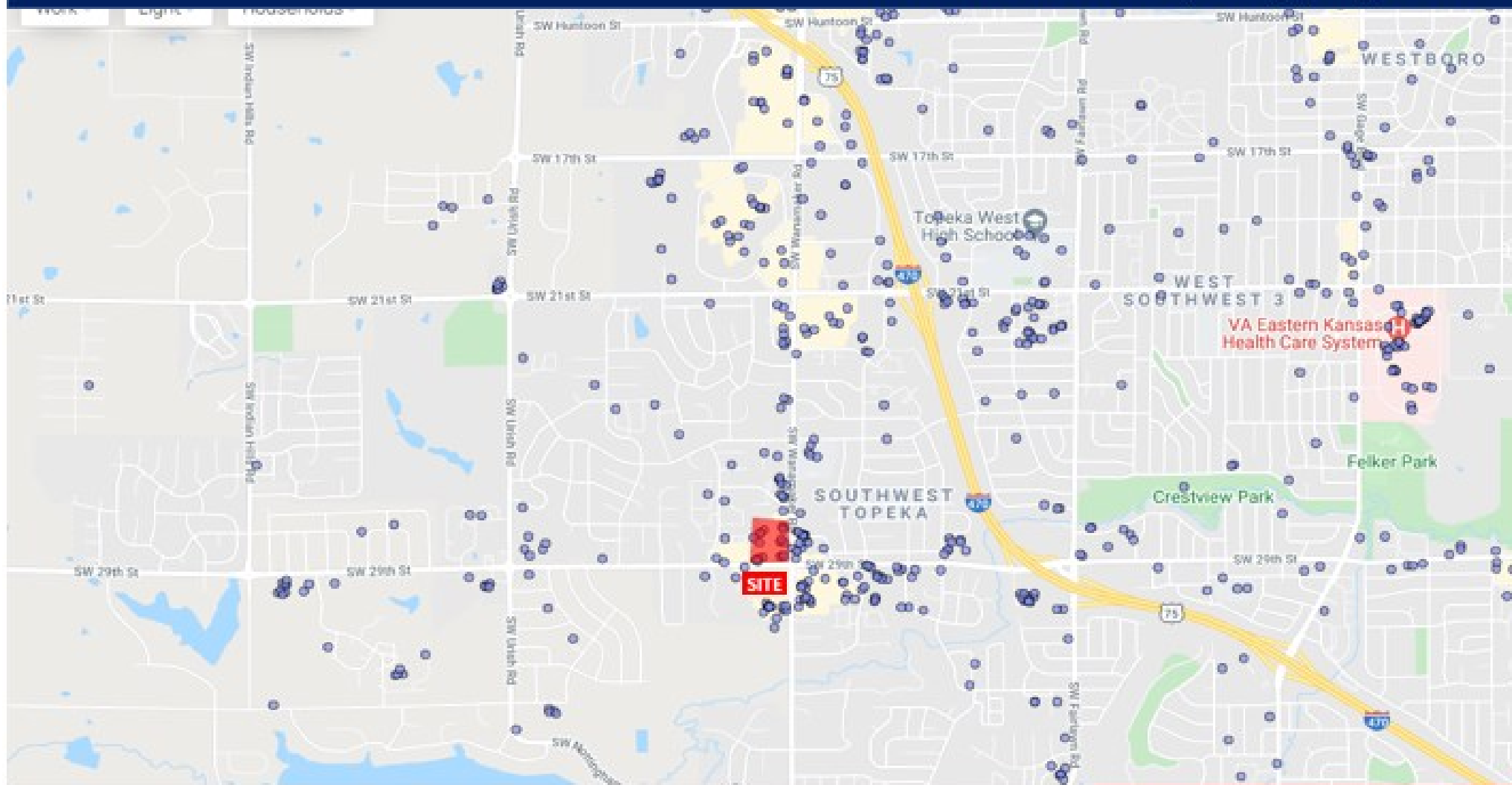
**Garrett Fugate**  
**O: 913-649-4500**  
**C: 913-515-1229**  
[garrett@christiedev.com](mailto:garrett@christiedev.com)

**CHRISTIE DEVELOPMENT  
ASSOCIATES, LLC**



# Business Density Map

## Sherwood Crossing Shopping Center



**FOR MORE  
INFORMATION  
PLEASE CONTACT**

**Garrett Fugate**  
**O: 913-649-4500**  
**C: 913-515-1229**  
[garrett@christiedev.com](mailto:garrett@christiedev.com)

**CHRISTIE DEVELOPMENT  
ASSOCIATES, LLC**



**REAL ESTATE DEVELOPMENT  
INVESTMENTS / BROKERAGE**